

Overview of Our Learning

Year 1: Term 3

'Into the Arctic'

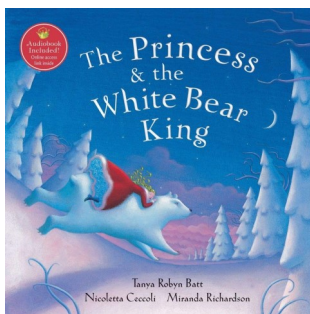


English

Writing: We will be focusing on transcription (spelling using Fred Talk and our letter formation) and composition (sharing and constructing our ideas through writing). We will focus on different parts of the class text to aid our writing and will be introduced to different text types, including a diary entry.

Power of Reading: The Princess and the white bear king by Tanya Robyn Batt

Reading: We will be working on developing our fluency when reading and our confidence when discussing a text's plot. We will begin to make predictions and develop skills in questioning.

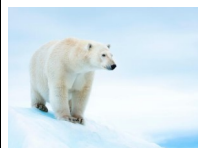


Humanities (Geography Focus)

Focus: The Arctic

Key Question: How is England different to other parts of the world?

We will be exploring the Arctic, Antarctica and England. We will be comparing them looking closely at the weather, climate and the animals which live there. We will also discuss the different places we have visited both in England and around the world.



Art and Design

To design, make and evaluate a collage of an animal.

Focus: Collage

Artists: Henri Matisse

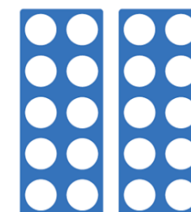
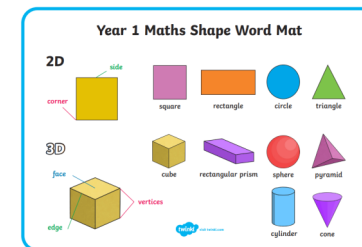
Media: Collage using different materials including paper, card, tissue paper and fabric.



Maths

Focus: Shape, Place Value (within 20) and Addition and Subtraction (within 20).

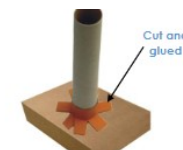
We will be using the 'Mastery Maths' approach which enables all children to have access to resources supporting their differing learning styles.



Design and Technology

Structures: Freestanding structures.

Focus: To design, make and evaluate a small model of an igloo.



Overview of Our Learning

Year 1: Term 3

'Into the Arctic'



Religious Education

Focus: Christianity

Key Question: What do Christians believe is God is like?

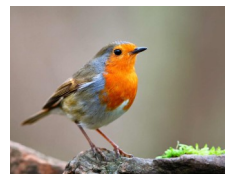
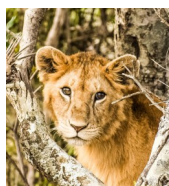
We will understand that Christians believe in God and that the Bible is the key way of finding out what they think God is like. We will be focusing on how Christians show their belief in God as loving and forgiving and how Christians put their beliefs into practice in worship.



Science

Focus: Animals including Humans

We will be identifying and naming a variety of common animals that are carnivores, herbivores and omnivores. We will then identify, name, draw and label the basic parts of the human body and say which part of the body is associated with each sense.



Wellbeing Curriculum

JIGSAW Focus: Dreams and Goals

Empowerment Approach:

We will be focussing on (learning intentions):

- I can set simple goals.
- I can set a goal and work out how to achieve it.
- I understand how to work well with a partner.
- I can tackle a new challenge and understand this might stretch my learning.
- I can identify obstacles which make it more difficult to achieve my new challenge and can work out how to overcome them .
- I can tell you how I felt when I succeeded in a new chal-

Music

Focus: Sing a song with changing speeds (tempo)

We will be exploring the term 'tempo' and both clap and sing to different patterns. We will then sing a song recognising changing speeds and invent new lyrics and clapping patterns.



Physical Education

Focus: Dance

We will be exploring simple movement patterns. We will be working on developing our balance, agility and co-ordination whilst performing dances.



PE days are WEDNESDAY and THURSDAY

Computing

Focus: Tech outside school.

We will find and understand examples of where technology is used in the local community and record examples of technology outside school.

